

Secures a longer service life for your engine

LUBRICANTS.
TECHNOLOGY.
PEOPLE.



Suitable for all gasoline engines with:

- Intake-manifold fuel injection
- Direct injection
- Carburettor
- 2-stroke engines

MAINTAIN GASOLINE PLUS – High performance gasoline additive concentrate

Area of application

This concentrate cleans the fuel system and then keeps it clean. The parts cleaned include the tank, the fuel lines and the fuel injector nozzles, yet also the combustion chamber, the air intake and particularly the valves, where any deposits are removed. This protects the engine, while also saving fuel.

Advantages

- Excellent removal of deposits
- Prevents formation of new deposits
- Excellent corrosion protection
- Excellent water separation
- Metal-free and ash-free technology
- Burns away without any residue
- Gentle on catalytic converters
- Suitable for use with all **standard commercial gasoline fuels**
- For gasoline fuels up to E20
- Maintains engine output
- Ideal for **continuous use**

Application

Add 0.25 liters of the concentrate per 60 liters of gasoline when filling your tank. Please avoid adding too much concentrate.

Packaging unit

Available in a box with 40 x 0.25-liter doses, including funnel filler.

MAINTAIN GASOLINE PLUS



Secures a longer service life for your engine

LUBRICANTS.
TECHNOLOGY.
PEOPLE.



The effect of MAINTAIN GASOLINE PLUS

Valve seat without ...



... with MAINTAIN GASOLINE PLUS



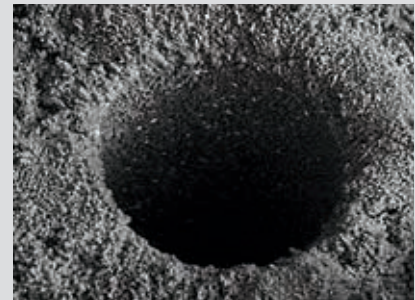
Inlet valve without ...



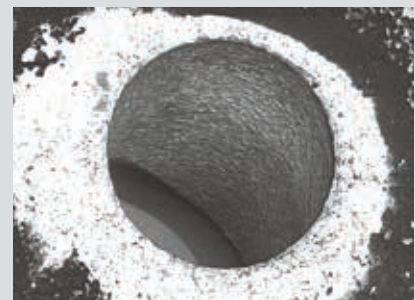
... with MAINTAIN GASOLINE PLUS



Injection nozzle without ...



... with MAINTAIN GASOLINE PLUS



FAQs

Are the deposits removed immediately?

No, they are "washed away" gradually.

Where do the deposits go when they have been removed? Do they end up in the engine oil?

No, all deposits are removed from the engine together with the exhaust gas, for example due to combustion.

Can the additive cause the catalytic converter to get clogged or even damaged?

No, the additive is combusted and does not leave any residue. The product will not have any negative impact on the catalytic converter. If your car is fitted with a particulate filter, this will also be fine.

What should I do if I have added too much of the concentrate to my tank?

Simply add an appropriate volume of fuel to compensate for this and establish the optimum mix. In many cases, just a short drive and subsequent fuel top-up is sufficient.

How does the additive mix with the fuel?

The product is self-mixing. Simply pour the concentrate into your tank before filling with gasoline. The additive will still mix with the fuel even if you add it to a full tank of gasoline, although will then take slightly longer to achieve the optimum mix. However, this ultimately has no impact on performance.

FUCHS EUROPE SCHMIERSTOFFE GMBH

Export Division

Friesenheimer Straße 19

68169 Mannheim/Germany

Phone: +49 621 3701-1703

Fax: +49 621 3701-7719

E-Mail: zentrale@fuchs-europe.de

www.fuchs-europe.de

The information contained in this product information leaflet is based on the experience, knowledge and expertise of FUCHS EUROPE SCHMIERSTOFFE GMBH in the development and manufacturing of lubricants and represents the current state of the art. The performance of our products can be influenced by a series of factors, especially the specific use, the method of application, the operational environment, component pretreatment, possible external contamination, etc. For this reason, universally valid statements about the function of our products are not possible. The information given in this product information represents general, non-binding guidelines. No warranty expressed or implied is given concerning the properties of the product or its suitability for any given application.

We therefore recommend that you consult a FUCHS EUROPE SCHMIERSTOFFE GMBH application engineer to discuss application conditions and the performance criteria of the products before the product is used. It is the responsibility of the user to test the functional suitability of the product and to use it with the corresponding care. Our products are subject to continuous further development. We therefore retain the right to change our product program, the products, and their manufacturing processes as well as all details of our product information sheets at any time and without warning. With publication of this product information leaflet, all previous editions cease to be valid.

Any form of reproduction requires express prior written permission from FUCHS EUROPE SCHMIERSTOFFE GMBH.

© FUCHS EUROPE SCHMIERSTOFFE GMBH. All rights reserved. Version 01/2015